



◀ **MATERIAL** ▶ **HANDLING**



PORT





FORKLIFT (FLT)



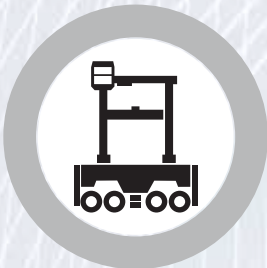
***EMPTY CONTAINER
HANDLER (ECH)***



***REACH STACKER
(RS)***



***RUBBER TIRE GANTRY
CRANE (RTG)***



***STRADDLE CARRIER
(SC)***





***AUTOMATED GUIDED
VEHICLE (AGV)***



***TERMINAL TRACTOR
(TT)***



***TERMINAL TRAILER
(TTLR)***

- **Pick & Stack** - Vehicles pick up and stack containers, travelling short distances with a large amount of turning on the spot.
- **Load & Carry** - Vehicles transport containers and goods over longer distances at higher average speeds.

PEB 720

Superior Stability & Traction



FLT



ECH



RS



RTG



SC



AGV



TT



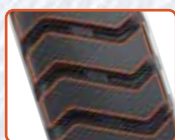
TTLR

■ Indicates machine compatibility



DEEP WIDE TREAD GROOVES:

- Reduced stress on the tread especially during taking turns when the machine is stationary
- Maximizes heat dissipation & aids cooler running of tyre



SUPERIOR TREAD DESIGN:

- Outstanding traction, performance & manoeuvrability at slow speeds
- Excellent stability in high load applications



SPECIAL TREAD COMPOUND:

- Minimizes wear and extends tyre life
- Engineered to support cooler running tyre



(IND-3)

Size	Rim	Unloaded Dimension		SLR	RC	LI/PR	TYPE	NSD	Inflation Pressure	Recommend Load, Kg (lbs)	Inflation Pressure	Recommend Load, Kg (lbs)
		SW	OD							Speed Km/h (mph)		Speed Km/h (mph)
		mm	mm							50		10
		in	in							31		7
14.00-24	10	375	1370	619	4098	28 PR	TT/TL	31	6.5	5600	9.25	10000
		14.8	53.9	24.4	161.3	188 A2		39	95	12320	135	22000

Size	Rim	Unloaded Dimension		SLR	RC	PR	TYPE	NSD	Inflation Pressure	Recommend Load, Kg (lbs)	Inflation Pressure	Recommend Load, Kg (lbs)
		SW	OD							Speed Km/h (mph)		Speed Km/h (mph)
		mm	mm							25		10
		in	in							16		6
16.00-25	11.25/2.0	465	1485	666	4441	32	TL	30	10	15625	10	16875
		18.3	58.5	26.2	174.9			37.8	145	34450	145	37210

PEB 721

Minimize Heat Build-up



FLT



ECH



RS



RTG



SC



AGV



TT



TTLR

■ Indicates machine compatibility



HIGH RUBBER DISTRIBUTION:

- This provides wide, stable and flat platform
- High traction and better load carrying capacity



OPTIMISED TREAD DESIGN:

- Provides optimal heat dissipation & cooler running tyre
- Reduces stress on tread blocks & limits crack generation



SPECIALLY FORMULATED TREAD COMPOUND:

- Better mileage & long tyre life
- Resistance to cuts, snags with optimised wear



STRONG CASING / CARCASS:

- Ensures maximum operating efficiency & exceptional stability on lift mode
- Provides opportunity to retread & use



(IND-4)

Size	Rim	Unloaded Dimension		SLR	RC	PR	TYPE	NSD	Inflation Pressure	Recommend Load, Kg (lbs)	Inflation Pressure	Recommend Load, Kg (lbs)
		SW	OD							Speed Km/h (mph)		Speed Km/h (mph)
		mm	mm							25		10
		in	in							16		6
12.00-24	8.5	315	1265	575	3783	20	TT	33.4	9.9	8630	9.9	9320
		12.4	49.8	22.6	148.9			42.2	144	19030	144	20550
12.00-24	8.5	315	1265	575	3783	24	TT	33.4	10	9510	10	10270
		12.4	49.8	22.6	148.9			42.2	145	20970	145	22650
18.00-25	13.00/2.5	528	1675	747	5010	40	TL	56	10.3	21250	10.3	22950
		20.8	65.9	29.4	197.2			70.6	150	46860	150	50600
18.00-33	13.00/2.5	510	1887	852	5644	40	TL	60	10.3	24375	10.3	26325
		20.1	74.3	33.5	222.2			75.6	150	53750	150	58050

PEB 722

Deep Tread Traction Tyre



FLT



ECH



RS



RTG



SC



AGV



TT



TTLR

■ Indicates machine compatibility



EXTRA TREAD DEPTH WITH HIGHER BASE COVER:

- 14/32 (11mm) deeper tread over regular IND 4 tyre for long tyre life
- Constructed to manage heat build-up associated with high NSD tyre



SPECIALLY FORMULATED TREAD COMPOUND:

- Increased abrasion resistance & strength for longer service life on hard abrasive surfaces
- Quick heat dissipation and cooler running



SPECIALLY DESIGN TREAD WITH HIGH RUBBER DISTRIBUTION AT CENTRE:

- More rubber for longer tyre life
- Excellent performance on wet and dry ground conditions



STRONG CASING & REINFORCED BEAD BUNDLE:

- Built for high intensity applications to minimize machine downtime due to tyre issues
- Ability to withstand high torque exerted by machines



(IND-4)

Size	Rim	Unloaded Dimension		SLR	RC	LI/PR	TYPE	NSD	Inflation Pressure	Recommend Load, Kg (lbs)	Inflation Pressure	Recommend Load, Kg (lbs)
		SW	OD							Speed Km/h (mph)		Speed Km/h (mph)
		mm	mm							25		10
		in	in							16		6
18.00-25	13.00/2.5	528	1675	747	5010	40	TL	67.5	10.3	21250	10.3	22950
		20.8	65.9	29.4	197.2			85	150	46860	150	50600

PEB 723

Maximized Tread Volume



■ Indicates machine compatibility



FLAT & WIDE TREAD SURFACE:

- Maximized tread surface area for superior traction and life
- Superior stability and easy manoeuvrability



REINFORCED SIDEWALL:

- Superior protection from sidewall damage



SPECIAL TREAD COMPOUND:

- Improved heat resistance, quick heat dissipation and cooler running on hard abrasive surfaces



STRONG CASING & REINFORCED BEAD BUNDLE:

- Built for high intensity applications to minimize machine downtime due to tyre issues
- Ability to withstand high torque exerted by machines



(L-4S)

Size	Rim	Unloaded Dimension		SLR	RC	LI/PR	TYPE	NSD	Inflation Pressure	Recommend Load, Kg (lbs)	Inflation Pressure	Recommend Load, Kg (lbs)
		SW	OD							Speed Km/h (mph)		Speed Km/h (mph)
		mm	mm							25		10
		in	in	in	in			32nds	psi	16	psi	6
18.00-25	13.00/2.5	528	1650	736	4935	40	TL	59	10.3	21250	10.3	22950
		20.8	65	29	194.3			74.3	150	46860	150	50600

Maximized Deep Tread Volume



■ Indicates machine compatibility



EXTRA DEEP TREAD WITH HIGHER BASE COVER:

- 32/32 (~25 mm) deeper tread over regular IND 4S tyre for long tyre life
- Constructed to manage heat build-up associated with high NSD tyre



FLAT & WIDE TREAD SURFACE:

- Maximized tread surface area for superior traction and life
- Superior stability and easy manoeuvrability



REINFORCED SIDEWALL:

- Superior protection from sidewall damage



SPECIAL TREAD COMPOUND :

- Improved heat resistance, quick heat dissipation and cooler running on hard abrasive surfaces



STRONG CASING & REINFORCED BEAD BUNDLE:

- Built for high intensity applications to minimize machine downtime due to tyre issues
- Ability to withstand high torque exerted by machines



(L-5S)

**Under development.*

Size	Rim	Unloaded Dimension		SLR	RC	LI/PR	TYPE	NSD	Inflation Pressure	Recommend Load, Kg (lbs)	Inflation Pressure	Recommend Load, Kg (lbs)
		SW	OD							Speed Km/h (mph)		Speed Km/h (mph)
		mm	mm							25		10
		in	in							16		6
18.00-25*	13.00/2.5	-	-	-	-	-	-	-	-	-	-	-
		-	-	-	-			-	-	-	-	-

**Under development.*

FLB 681

Maximized Deep Tread Volume



FLT



ECH



RS



RTG



SC



AGV

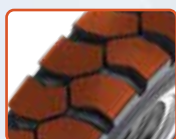


TT



TTLR

■ Indicates machine compatibility



SPECIALLY DESIGNED TREAD:

- Ensures optimal load distribution & superior stability
- Deep tread for long life
- Sturdy circumferential tie bar to support and strengthen tread pattern



STRONG CASING:

- For excellent durability in applications
- Promotes superior stability while performing lifting operations



SPECIAL INDUSTRIAL TREAD COMPOUND:

- Ensures resistant to abrasive surface conditions
- Resists cuts and tears



(NHS)

Size	Rim	Unloaded Dimension		SLR	RC	LI/PR	TYPE	NSD	Inflation Pressure	Recommend Load, Kg (lbs)	
										Speed Km/h (mph)	
		SW	OD							Load Wheel	Steer Wheel
		mm	mm							25 kmph	25 kmph
		in	in							in	in
9.00-20	7	269	1036	472	3098	16	TT	28.5	10	6175	4750
		10.6	40.8	18.6	122			36	145	13614	10472
10.00-20 (HD)	7.5	284	1074	487	3212	18	TT	34	10	6890	5300
		11.2	42.3	19.2	126.5			43	145	15190	11685
12.00-20 (HD)	8.5	315	1146	517	3427	20	TT	38	10	9230	7100
		12.4	45.1	20.4	134.9			48	145	20349	15653

FORKLIFT



FLB 680

Maximized Deep Tread Volume



FLT



ECH



RS



RTG



SC



AGV



TT



TTLR

■ Indicates machine compatibility



UNIQUE BLOCK PATTERN DESIGN:

- Ensures High traction
- Optimum Load Distribution and wide footprint for Strong Stability
- Enhanced performance on both indoor and outdoor areas



(NHS)

Size	Rim	Unloaded Dimension		SLR	RC	LI/PR	TYPE	NSD	Inflation Pressure	Recommend Load, Kg (lbs)	
		SW	OD							Speed Km/h (mph)	
				Load Wheel	Steer Wheel						
				mm	mm			mm	mm	mm	bar
in	in	in	in	32nds	psi	9 mph	16 mph				
5.00-8	3.00DX8	131	469	211	1403	10	TT	12.5	10	1250	–
		5.2	18.5	8.3	55.2			15.8	145	2750	–
18×7-8	4.33RX8	168	465	210	1391	16	TT	12.5	10	2130	1640
		6.6	18.3	8.3	54.4			15.8	145	4690	3610
6.00-9	4.00EX9	160	545	245	1630	10	TT	13	8.5	1685	1280
		6.3	21.5	9.6	64.2			16.3	123	3710	2820
6.00-9	4.00EX9	160	545	245	1630	12	TT	13	10	1875	1425
		6.3	21.5	9.6	64.2			16.3	145	4135	3140
21×8-9	6.00EX9	203	533	240	1594	14	TT	16	9	2350	1785
		8	21	9.4	62.8			20	131	5180	3930

Continued...

FLB 680 ...Continued

Maximized Deep Tread Volume



FLT



ECH



RS



RTG



SC



AGV



TT



TTLR

■ Indicates machine compatibility

Size	Rim	Unloaded Dimension		SLR	RC	LI/PR	TYPE	NSD	Inflation Pressure	Recommend Load, Kg (lbs)	
		SW	OD							Speed Km/h (mph)	
										Load Wheel	Steer Wheel
mm	mm	mm	mm	mm	bar	15 kmph	25 kmph				
in	in	in	in	in	psi	9 mph	16 mph				
6.50-10	5.00FX10	178	597	268	1785	12	TT	14.5	9	2150	1635
		7	23.5	10.6	70.3			18.3	131	4740	3600
7.00-12	5.00X12	192	683	308	2042	12	TT	14.5	8.6	2720	2065
		7.6	26.9	12.1	80.4			18.3	125	5990	4550
7.00-12	5.00X12	192	683	308	2042	14	TT	14.5	9	2790	2120
		7.6	26.9	12.1	80.4			18.3	125	6151	4674
300-15	8.0X15	300	840	380	2512	20	TT	22	9.3	6575	4990
		11.8	33.1	15	98.9			27.8	135	14480	10990
7.00-15	6.00X15	203	762	348	2279	12	TT	16	8.6	3150	2395
		8	30	13.7	89.7			20	125	6940	5280
7.50-15	6.00X15	215	808	367	2417	12	TT	16	7.9	3490	2650
		8.5	31.8	14.5	95.2			20	115	7690	5840
8.25-15	6.50X15	236	847	383	2533	14	TT	18	8.3	4255	3235
		9.3	33.4	15.1	99.7			22.7	120	9370	7130
28X9-15	7.00X15	221	706	325	2111	14	TT	18	9.7	3415	2595
		8.7	27.8	12.8	83.1			22.7	141	7520	5720

FLB 681

Maximized Deep Tread Volume



FLT



ECH



RS



RTG



SC



AGV



TT



TTLR

■ Indicates machine compatibility



SPECIALLY DESIGNED TREAD:

- Ensures optimal load distribution & superior stability
- Deep tread for long life
- Sturdy circumferential tie bar to support and strengthen tread pattern



STRONG CASING:

- For excellent durability in applications
- Promotes superior stability while performing lifting operations



SPECIAL INDUSTRIAL TREAD COMPOUND:

- Ensures resistant to abrasive surface conditions
- Resists cuts and tears



(NHS)

Size	Rim	Unloaded Dimension		SLR	RC	LI/PR	TYPE	NSD	Inflation Pressure	Recommend Load, Kg (lbs)	
		SW	OD							Speed Km/h (mph)	
										Load Wheel	Steer Wheel
										mm	mm
in	in	in	in	32nds	psi	16 mph	16 mph				
7.50-16	6	223	835	380	2497	16	TT	18.5	10.3	3068	2360
		8.8	32.9	15	98.3			23.3	149	6764	5203
9.00-20	7	269	1036	472	3098	16	TT	28.5	10	6175	4750
		10.6	40.8	18.6	122			36	145	13614	10472
10.00-20 (HD)	7.5	284	1074	487	3212	18	TT	34	10	6890	5300
		11.2	42.3	19.2	126.5			43	145	15190	11685
12.00-20 (HD)	8.5	315	1146	517	3427	20	TT	38	10	9230	7100
		12.4	45.1	20.4	134.9			48	145	20349	15653



Our philosophy to conserve and protect natural resources
for future generations through environmental stewardship



Mahansaria Tyres Pvt. Ltd.
3rd Floor, Peninsula Chambers, Ganpat Rao Kadam Marg,
Lower Parel West, Mumbai 400013, India
T: +91 22 4348 1600
E: enquiry@ascensotyres.com
W: www.ascensotyres.com



Please sign and stamp inside the box

Distributor/Dealer